

DEAL POST TEST 2019-20 - SCHOOL REPORT CARD

PONDY
DDW

34020100602 GMS, PUDUPALAYAM

All Grades represent the following scorings in % *

GRADE A - >75	
GRADE B - 51 TO 75	* School Status Grade
GRADE C - 26 TO 50	represents the total
GRADE D - 10 TO 25	enrollment of the
GRADE E - <10	school (Not %)

Note: The Values given in the brackets denote the difference between the Pre and Post Test Scores.
(For Example: If the Pre-Test Grade is 'C' and the Post-Test Grade is 'A', then the progress is +2)

SCHOOL GRADE - AB

Status Gr. A (0) Performance Gr. B (0)

OVERALL PERFORMANCE GRADES

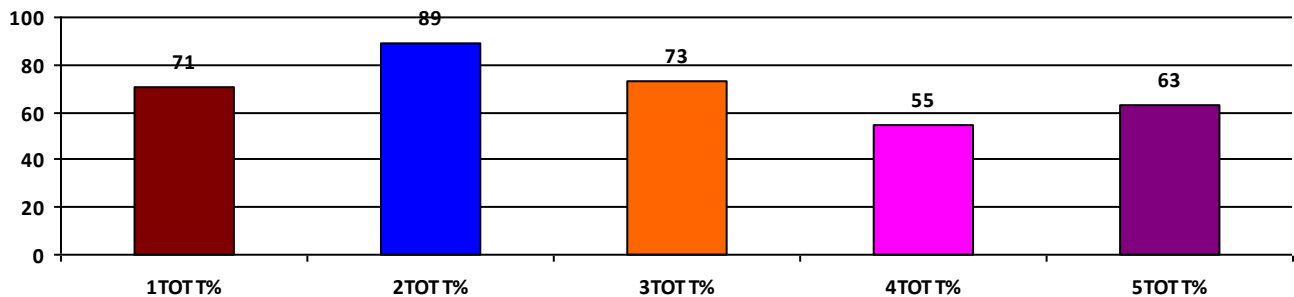
	Boys	Girls	Total
SCHOOL GR.	B	B	B
Diff. to Pre-Test	(+1)	(0)	(0)
DIST. GR.	B	B	B
STATE GR.	B	B	B

CLASSWISE APPEARED

DETAILS	I STD	II STD	III STD	IV STD	V STD
BOYS	12	7	11	10	11
GIRLS	11	3	11	12	11
TOTAL	23	10	22	22	22
Diff. to Pre-Test	(+1)	(-1)	(-1)	(+2)	(0)

CLASSWISE PERFORMANCE GRADES (% of marks)

DETAILS	I STD	II STD	III STD	IV STD	V STD
%	71	89	73	55	63
SCHOOL GR.	B	A	B	B	B
Diff. to Pre-Test	(0)	(+1)	(0)	(+1)	(+1)
DIST. GR.	A	B	B	B	B
STATE GR.	A	B	B	B	B



GRADEWISE PERFORMANCE (NO. OF STUDENTS)

ENGLISH	1 Std	2 Std	3 Std	4 Std	5 Std	TAMIL	1 Std	2 Std	3 Std	4 Std	5 Std
GR. A	13	9	14	2	11	GR. A	13	10	13	10	9
GR. B	5	0	4	10	4	GR. B	6	0	6	7	5
GR. C	2	1	2	6	3	GR. C	3	0	2	2	5
GR. D	3	0	1	1	2	GR. D	1	0	0	0	1
GR. E	0	0	1	3	2	GR. E	0	0	1	3	2

DEAL POST TEST 2019-20 - SCHOOL REPORT CARD

PONDY
DDW

34020100609 MAHATMA GANDHI GMS, NELLITHOPE

All Grades represent the following scorings in % *

GRADE A - >75	* School Status Grade represents the total enrollment of the school (Not %)
GRADE B - 51 TO 75	
GRADE C - 26 TO 50	
GRADE D - 10 TO 25	
GRADE E - <10	

Note: The Values given in the brackets denote the difference between the Pre and Post Test Scores.
(For Example: If the Pre-Test Grade is 'C' and the Post-Test Grade is 'A', then the progress is +2)

SCHOOL GRADE - CB

Status Gr. C (0) Performance Gr. B (0)

OVERALL PERFORMANCE GRADES

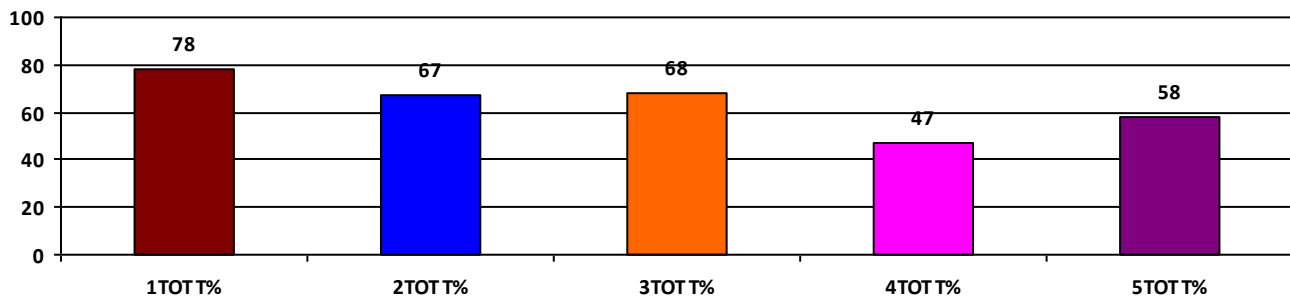
	Boys	Girls	Total
SCHOOL GR.	B	B	B
Diff. to Pre-Test	(0)	(0)	(0)
DIST. GR.	B	B	B
STATE GR.	B	B	B

CLASSWISE APPEARED

DETAILS	I STD	II STD	III STD	IV STD	V STD
BOYS	5	2	3	6	5
GIRLS	3	2	1	3	5
TOTAL	8	4	4	9	10
Diff. to Pre-Test	(-2)	(0)	(0)	(+1)	(0)

CLASSWISE PERFORMANCE GRADES (% of marks)

DETAILS	I STD	II STD	III STD	IV STD	V STD
%	78	67	68	47	58
SCHOOL GR.	A	B	B	C	B
Diff. to Pre-Test	(+1)	(-1)	(0)	(0)	(0)
DIST. GR.	A	B	B	B	B
STATE GR.	A	B	B	B	B



GRADEWISE PERFORMANCE (NO. OF STUDENTS)

ENGLISH	1 Std	2 Std	3 Std	4 Std	5 Std	TAMIL	1 Std	2 Std	3 Std	4 Std	5 Std
GR. A	5	1	0	3	3	GR. A	6	2	2	3	3
GR. B	2	2	3	0	4	GR. B	1	1	2	1	3
GR. C	1	1	1	3	0	GR. C	1	1	0	2	2
GR. D	0	0	0	1	2	GR. D	0	0	0	1	1
GR. E	0	0	0	2	1	GR. E	0	0	0	2	1

DEAL POST TEST 2019-20 - SCHOOL REPORT CARD

PONDY
DDW

34020101608 **GMS, LAWSPET**

All Grades represent the following scorings in % *

GRADE A - >75	
GRADE B - 51 TO 75	* School Status Grade
GRADE C - 26 TO 50	represents the total
GRADE D - 10 TO 25	enrollment of the
GRADE E - <10	school (Not %)

Note: The Values given in the brackets denote the difference between the Pre and Post Test Scores.
(For Example: If the Pre-Test Grade is 'C' and the Post-Test Grade is 'A', then the progress is +2)

SCHOOL GRADE - AB

Status Gr. A (0)	Performance Gr. B(+1)
------------------	-----------------------

OVERALL PERFORMANCE GRADES

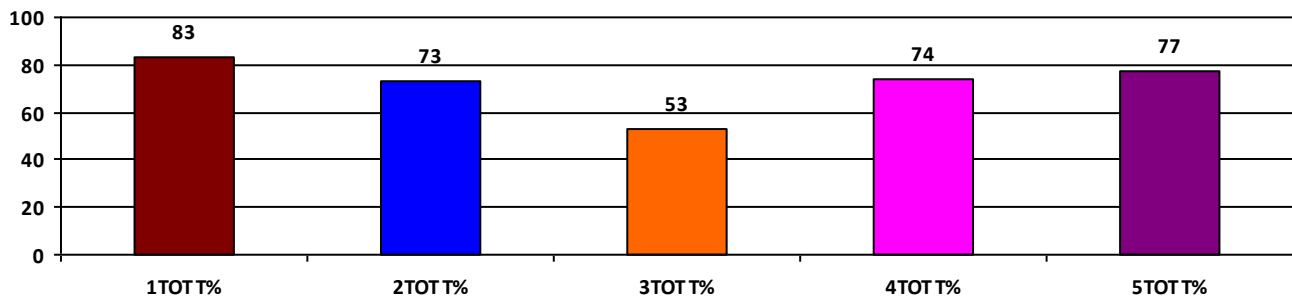
	Boys	Girls	Total
SCHOOL GR.	B	B	B
Diff. to Pre-Test	(+1)	(0)	(+1)
DIST. GR.	B	B	B
STATE GR.	B	B	B

CLASSWISE APPEARED

DETAILS	I STD	II STD	III STD	IV STD	V STD
BOYS	7	11	17	15	12
GIRLS	12	18	19	17	20
TOTAL	19	29	36	32	32
Diff. to Pre-Test	(-1)	(+1)	(+2)	(+3)	(+2)

CLASSWISE PERFORMANCE GRADES (% of marks)

DETAILS	I STD	II STD	III STD	IV STD	V STD
%	83	73	53	74	77
SCHOOL GR.	A	B	B	B	A
Diff. to Pre-Test	(+2)	(+1)	(+1)	(+1)	(+1)
DIST. GR.	A	B	B	B	B
STATE GR.	A	B	B	B	B



GRADEWISE PERFORMANCE (NO. OF STUDENTS)

ENGLISH	1 Std	2 Std	3 Std	4 Std	5 Std	TAMIL	1 Std	2 Std	3 Std	4 Std	5 Std
GR. A	14	15	4	18	20	GR. A	15	20	16	25	22
GR. B	3	8	11	9	8	GR. B	3	5	9	2	5
GR. C	2	2	11	2	1	GR. C	1	2	7	2	2
GR. D	0	0	7	0	1	GR. D	0	1	1	0	0
GR. E	0	4	3	3	2	GR. E	0	1	3	3	3

DEAL POST TEST 2019-20 - SCHOOL REPORT CARD

PONDY
DDW

34020102505 THILLAIYADI VALLIAMMAI GHS, KADIRKAMAM

All Grades represent the following scorings in % *

GRADE A - >75	* School Status Grade represents the total enrollment of the school (Not %)
GRADE B - 51 TO 75	
GRADE C - 26 TO 50	
GRADE D - 10 TO 25	
GRADE E - <10	

Note: The Values given in the brackets denote the difference between the Pre and Post Test Scores.
(For Example: If the Pre-Test Grade is 'C' and the Post-Test Grade is 'A', then the progress is +2)

SCHOOL GRADE - AB

Status Gr. A (0)	Performance Gr. B (0)
------------------	-----------------------

OVERALL PERFORMANCE GRADES

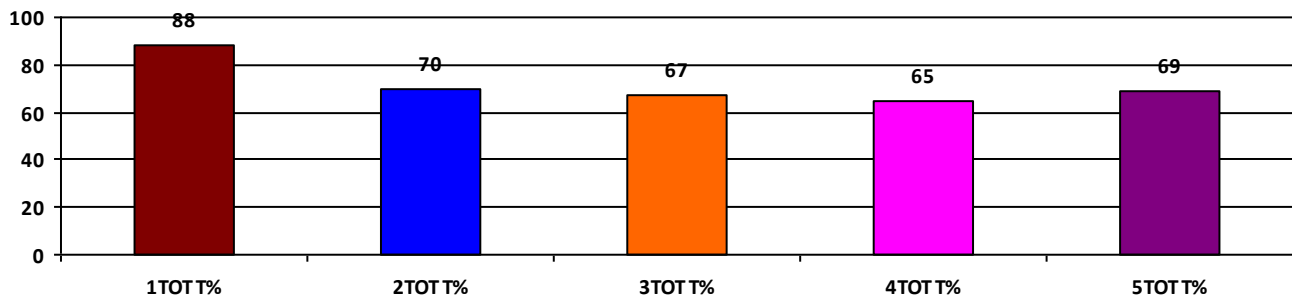
	Boys	Girls	Total
SCHOOL GR.	B	B	B
Diff. to Pre-Test	(0)	(0)	(0)
DIST. GR.	B	B	B
STATE GR.	B	B	B

CLASSWISE APPEARED

DETAILS	I STD	II STD	III STD	IV STD	V STD
BOYS	12	6	23	15	22
GIRLS	7	12	19	35	42
TOTAL	19	18	42	50	64
Diff. to Pre-Test	(-1)	(0)	(0)	(+3)	(+3)

CLASSWISE PERFORMANCE GRADES (% of marks)

DETAILS	I STD	II STD	III STD	IV STD	V STD
%	88	70	67	65	69
SCHOOL GR.	A	B	B	B	B
Diff. to Pre-Test	(+1)	(+1)	(0)	(+1)	(0)
DIST. GR.	A	B	B	B	B
STATE GR.	A	B	B	B	B



GRADEWISE PERFORMANCE (NO. OF STUDENTS)

ENGLISH	1 Std	2 Std	3 Std	4 Std	5 Std	TAMIL	1 Std	2 Std	3 Std	4 Std	5 Std
GR. A	18	6	16	18	31	GR. A	17	12	17	24	28
GR. B	1	7	19	18	23	GR. B	2	3	16	14	21
GR. C	0	4	4	8	8	GR. C	0	1	7	5	13
GR. D	0	1	1	4	0	GR. D	0	2	0	3	0
GR. E	0	0	2	2	2	GR. E	0	0	2	4	2

DEAL POST TEST 2019-20 - SCHOOL REPORT CARD

PONDY
DDW

34020102508 GGMS, DELARSHPET

All Grades represent the following scorings in % *

GRADE A - >75	* School Status Grade represents the total enrollment of the school (Not %)
GRADE B - 51 TO 75	
GRADE C - 26 TO 50	
GRADE D - 10 TO 25	
GRADE E - <10	

Note: The Values given in the brackets denote the difference between the Pre and Post Test Scores.
(For Example: If the Pre-Test Grade is 'C' and the Post-Test Grade is 'A', then the progress is +2)

SCHOOL GRADE - CB

Status Gr. C (0) Performance Gr. B (0)

OVERALL PERFORMANCE GRADES

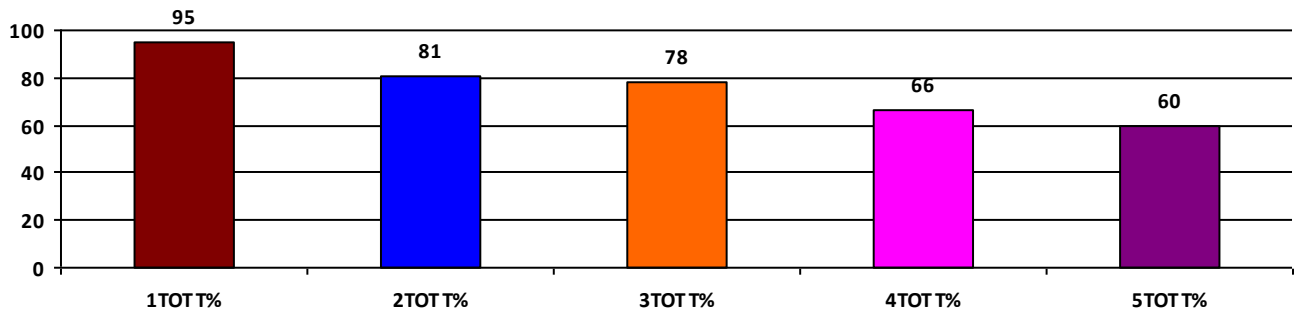
	Boys	Girls	Total
SCHOOL GR.	NA	B	B
Diff. to Pre-Test	(+8)	(0)	(0)
DIST. GR.	B	B	B
STATE GR.	B	B	B

CLASSWISE APPEARED

DETAILS	I STD	II STD	III STD	IV STD	V STD
BOYS	0	0	0	0	0
GIRLS	8	3	2	6	8
TOTAL	8	3	2	6	8
Diff. to Pre-Test	(-1)	(0)	(0)	(+1)	(0)

CLASSWISE PERFORMANCE GRADES (% of marks)

DETAILS	I STD	II STD	III STD	IV STD	V STD
%	95	81	78	66	60
SCHOOL GR.	A	A	A	B	B
Diff. to Pre-Test	(+1)	(+1)	(+1)	(0)	(0)
DIST. GR.	A	B	B	B	B
STATE GR.	A	B	B	B	B



GRADEWISE PERFORMANCE (NO. OF STUDENTS)

ENGLISH	1 Std	2 Std	3 Std	4 Std	5 Std	TAMIL	1 Std	2 Std	3 Std	4 Std	5 Std
GR. A	7	2	1	2	4	GR. A	8	3	1	3	5
GR. B	1	1	1	1	2	GR. B	0	0	1	3	1
GR. C	0	0	0	3	0	GR. C	0	0	0	0	0
GR. D	0	0	0	0	0	GR. D	0	0	0	0	0
GR. E	0	0	0	0	2	GR. E	0	0	0	0	2

DEAL POST TEST 2019-20 - SCHOOL REPORT CARD

PONDY
DDW

34020102509 **GBMS, DELARSHPET**

All Grades represent the following scorings in % *

GRADE A - >75	* School Status Grade represents the total enrollment of the school (Not %)
GRADE B - 51 TO 75	
GRADE C - 26 TO 50	
GRADE D - 10 TO 25	
GRADE E - <10	

Note: The Values given in the brackets denote the difference between the Pre and Post Test Scores.
(For Example: If the Pre-Test Grade is 'C' and the Post-Test Grade is 'A', then the progress is +2)

SCHOOL GRADE - CB

Status Gr. C (0)	Performance Gr. B (0)
------------------	-----------------------

OVERALL PERFORMANCE GRADES

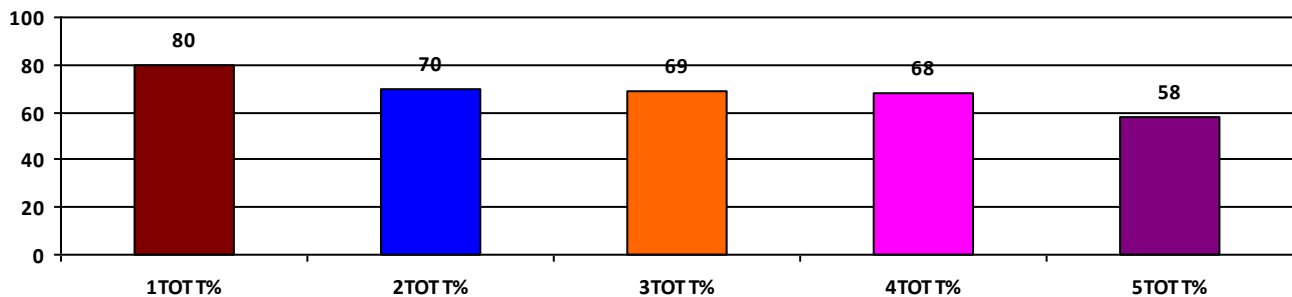
	Boys	Girls	Total
SCHOOL GR.	B	NA	B
Diff. to Pre-Test	(0)	(+8)	(0)
DIST. GR.	B	B	B
STATE GR.	B	B	B

CLASSWISE APPEARED

DETAILS	I STD	II STD	III STD	IV STD	V STD
BOYS	5	4	8	7	10
GIRLS	0	0	0	0	0
TOTAL	5	4	8	7	10
Diff. to Pre-Test	(0)	(0)	(+1)	(0)	(0)

CLASSWISE PERFORMANCE GRADES (% of marks)

DETAILS	I STD	II STD	III STD	IV STD	V STD
%	80	70	69	68	58
SCHOOL GR.	A	B	B	B	B
Diff. to Pre-Test	(+2)	(0)	(0)	(0)	(+1)
DIST. GR.	A	B	B	B	B
STATE GR.	A	B	B	B	B



GRADEWISE PERFORMANCE (NO. OF STUDENTS)

ENGLISH	1 Std	2 Std	3 Std	4 Std	5 Std	TAMIL	1 Std	2 Std	3 Std	4 Std	5 Std
GR. A	3	2	5	1	3	GR. A	4	3	6	4	5
GR. B	1	1	1	4	3	GR. B	1	0	0	3	1
GR. C	1	0	0	2	3	GR. C	0	1	0	0	2
GR. D	0	1	1	0	0	GR. D	0	0	0	0	1
GR. E	0	0	1	0	1	GR. E	0	0	2	0	1

DEAL POST TEST 2019-20 - SCHOOL REPORT CARD

PONDY
DDW

34020105901 **GPS-THENGAITHITU**

All Grades represent the following scorings in % *

GRADE A - >75	* School Status Grade represents the total enrollment of the school (Not %)
GRADE B - 51 TO 75	
GRADE C - 26 TO 50	
GRADE D - 10 TO 25	
GRADE E - <10	

Note: The Values given in the brackets denote the difference between the Pre and Post Test Scores.
(For Example: If the Pre-Test Grade is 'C' and the Post-Test Grade is 'A', then the progress is +2)

SCHOOL GRADE - AB

Status Gr. A (0) Performance Gr. B(+1)

OVERALL PERFORMANCE GRADES

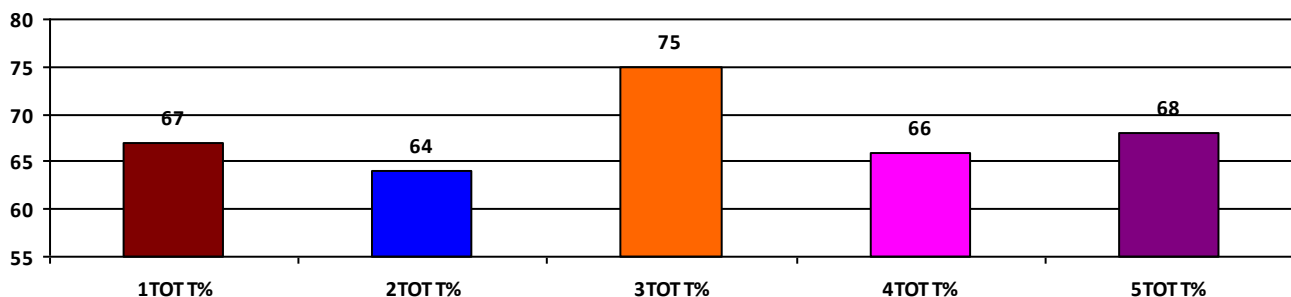
	Boys	Girls	Total
SCHOOL GR.	B	A	B
Diff. to Pre-Test	(+1)	(+1)	(+1)
DIST. GR.	B	B	B
STATE GR.	B	B	B

CLASSWISE APPEARED

DETAILS	I STD	II STD	III STD	IV STD	V STD
BOYS	6	10	11	10	7
GIRLS	6	5	11	5	8
TOTAL	12	15	22	15	15
Diff. to Pre-Test	(+2)	(0)	(+1)	(+1)	(0)

CLASSWISE PERFORMANCE GRADES (% of marks)

DETAILS	I STD	II STD	III STD	IV STD	V STD
%	67	64	75	66	68
SCHOOL GR.	B	B	B	B	B
Diff. to Pre-Test	(0)	(+1)	(+1)	(0)	(0)
DIST. GR.	A	B	B	B	B
STATE GR.	A	B	B	B	B



GRADEWISE PERFORMANCE (NO. OF STUDENTS)

ENGLISH	1 Std	2 Std	3 Std	4 Std	5 Std	TAMIL	1 Std	2 Std	3 Std	4 Std	5 Std
GR. A	2	2	9	2	6	GR. A	6	9	16	8	8
GR. B	7	6	9	8	5	GR. B	4	3	4	6	5
GR. C	3	5	4	5	4	GR. C	2	3	2	1	2
GR. D	0	2	0	0	0	GR. D	0	0	0	0	0
GR. E	0	0	0	0	0	GR. E	0	0	0	0	0

DEAL POST TEST 2019-20 - SCHOOL REPORT CARD

PONDY
DDW

34020107201 **Dr.B.R.AMBEDKAR GMS, PAKKAMUDAYANPET**

All Grades represent the following scorings in % *

GRADE A - >75	* School Status Grade represents the total enrollment of the school (Not %)
GRADE B - 51 TO 75	
GRADE C - 26 TO 50	
GRADE D - 10 TO 25	
GRADE E - <10	

Note: The Values given in the brackets denote the difference between the Pre and Post Test Scores.
(For Example: If the Pre-Test Grade is 'C' and the Post-Test Grade is 'A', then the progress is +2)

SCHOOL GRADE - DB

Status Gr. D (0) Performance Gr. B (0)

OVERALL PERFORMANCE GRADES

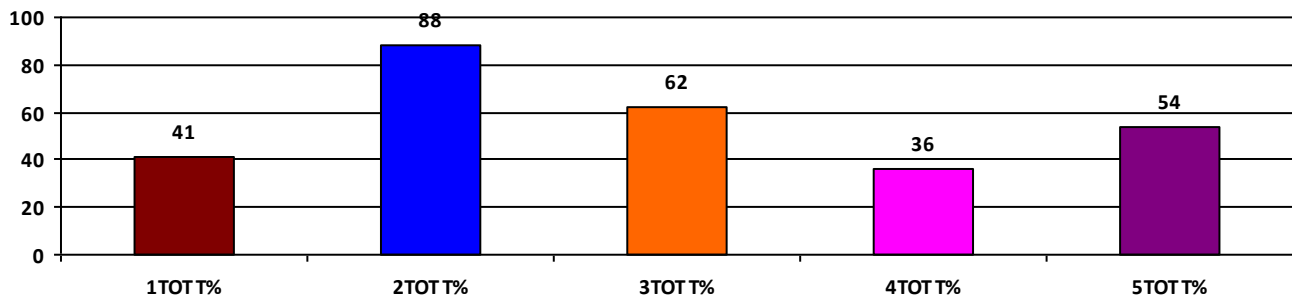
	Boys	Girls	Total
SCHOOL GR.	C	A	B
Diff. to Pre-Test	(-1)	(+1)	(0)
DIST. GR.	B	B	B
STATE GR.	B	B	B

CLASSWISE APPEARED

DETAILS	I STD	II STD	III STD	IV STD	V STD
BOYS	1	0	2	6	2
GIRLS	1	3	1	0	2
TOTAL	2	3	3	6	4
Diff. to Pre-Test	(0)	(0)	(0)	(+1)	(0)

CLASSWISE PERFORMANCE GRADES (% of marks)

DETAILS	I STD	II STD	III STD	IV STD	V STD
%	41	88	62	36	54
SCHOOL GR.	C	A	B	C	B
Diff. to Pre-Test	(-1)	(+1)	(0)	(-1)	(0)
DIST. GR.	A	B	B	B	B
STATE GR.	A	B	B	B	B



GRADEWISE PERFORMANCE (NO. OF STUDENTS)

ENGLISH	1 Std	2 Std	3 Std	4 Std	5 Std	TAMIL	1 Std	2 Std	3 Std	4 Std	5 Std
GR. A	0	3	0	0	1	GR. A	0	3	2	0	2
GR. B	1	0	1	0	1	GR. B	1	0	1	3	1
GR. C	0	0	2	3	1	GR. C	1	0	0	1	0
GR. D	1	0	0	2	0	GR. D	0	0	0	1	0
GR. E	0	0	0	1	1	GR. E	0	0	0	1	1

DEAL POST TEST 2019-20 - SCHOOL REPORT CARD

PONDY
DDW

34020107301 NVGMS, PILLAICHAVADY

All Grades represent the following scorings in % *

GRADE A - >75	* School Status Grade represents the total enrollment of the school (Not %)
GRADE B - 51 TO 75	
GRADE C - 26 TO 50	
GRADE D - 10 TO 25	
GRADE E - <10	

Note: The Values given in the brackets denote the difference between the Pre and Post Test Scores.
(For Example: If the Pre-Test Grade is 'C' and the Post-Test Grade is 'A', then the progress is +2)

SCHOOL GRADE - BB

Status Gr. B (0) Performance Gr. B (0)

OVERALL PERFORMANCE GRADES

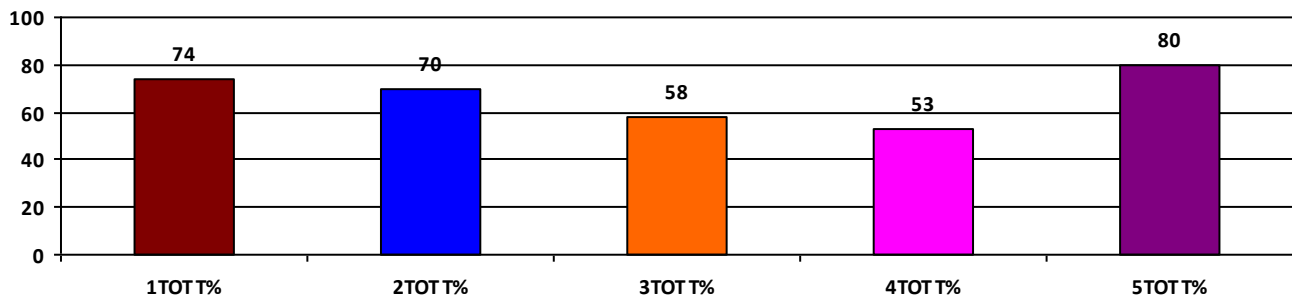
	Boys	Girls	Total
SCHOOL GR.	B	B	B
Diff. to Pre-Test	(0)	(0)	(0)
DIST. GR.	B	B	B
STATE GR.	B	B	B

CLASSWISE APPEARED

DETAILS	I STD	II STD	III STD	IV STD	V STD
BOYS	5	10	13	7	5
GIRLS	7	5	8	5	6
TOTAL	12	15	21	12	11
Diff. to Pre-Test	(0)	(0)	(0)	(0)	(0)

CLASSWISE PERFORMANCE GRADES (% of marks)

DETAILS	I STD	II STD	III STD	IV STD	V STD
%	74	70	58	53	80
SCHOOL GR.	B	B	B	B	A
Diff. to Pre-Test	(0)	(0)	(+1)	(0)	(0)
DIST. GR.	A	B	B	B	B
STATE GR.	A	B	B	B	B



GRADEWISE PERFORMANCE (NO. OF STUDENTS)

ENGLISH	1 Std	2 Std	3 Std	4 Std	5 Std	TAMIL	1 Std	2 Std	3 Std	4 Std	5 Std
GR. A	5	4	1	2	7	GR. A	6	9	9	3	9
GR. B	6	7	9	1	3	GR. B	6	5	5	7	2
GR. C	1	3	11	6	1	GR. C	0	1	7	1	0
GR. D	0	1	0	3	0	GR. D	0	0	0	1	0
GR. E	0	0	0	0	0	GR. E	0	0	0	0	0

DEAL POST TEST 2019-20 - SCHOOL REPORT CARD

PONDY
DDW

34020112838 **GGMS, MUTHIALPET**

All Grades represent the following scorings in % *

GRADE A - >75	* School Status Grade represents the total enrollment of the school (Not %)
GRADE B - 51 TO 75	
GRADE C - 26 TO 50	
GRADE D - 10 TO 25	
GRADE E - <10	

Note: The Values given in the brackets denote the difference between the Pre and Post Test Scores.
(For Example: If the Pre-Test Grade is 'C' and the Post-Test Grade is 'A', then the progress is +2)

SCHOOL GRADE - AC

Status Gr. A (0) Performance Gr. C (0)

OVERALL PERFORMANCE GRADES

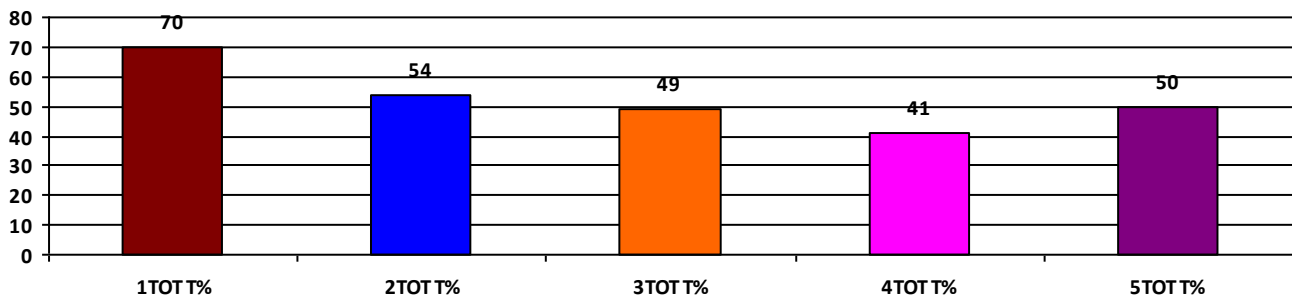
	Boys	Girls	Total
SCHOOL GR.	NA	C	C
Diff. to Pre-Test	(+8)	(0)	(0)
DIST. GR.	B	B	B
STATE GR.	B	B	B

CLASSWISE APPEARED

DETAILS	I STD	II STD	III STD	IV STD	V STD
BOYS	0	0	0	0	0
GIRLS	9	14	46	29	47
TOTAL	9	14	46	29	47
Diff. to Pre-Test	(-2)	(+2)	(+1)	(+2)	(+3)

CLASSWISE PERFORMANCE GRADES (% of marks)

DETAILS	I STD	II STD	III STD	IV STD	V STD
%	70	54	49	41	50
SCHOOL GR.	B	B	C	C	C
Diff. to Pre-Test	(0)	(+1)	(0)	(0)	(0)
DIST. GR.	A	B	B	B	B
STATE GR.	A	B	B	B	B



GRADEWISE PERFORMANCE (NO. OF STUDENTS)

ENGLISH	1 Std	2 Std	3 Std	4 Std	5 Std	TAMIL	1 Std	2 Std	3 Std	4 Std	5 Std
GR. A	5	0	3	1	5	GR. A	4	1	13	5	8
GR. B	2	10	11	11	19	GR. B	3	7	14	9	17
GR. C	2	4	26	3	15	GR. C	1	4	11	8	15
GR. D	0	0	4	10	5	GR. D	1	2	5	4	3
GR. E	0	0	2	4	3	GR. E	0	0	3	3	4

DEAL POST TEST 2019-20 - SCHOOL REPORT CARD

PONDY
DDW

34020112864 **GPS-VAMBAKEERAPALAYM**

All Grades represent the following scorings in % *

GRADE A - >75	
GRADE B - 51 TO 75	* School Status Grade
GRADE C - 26 TO 50	represents the total
GRADE D - 10 TO 25	enrollment of the
GRADE E - <10	school (Not %)

Note: The Values given in the brackets denote the difference between the Pre and Post Test Scores.
(For Example: If the Pre-Test Grade is 'C' and the Post-Test Grade is 'A', then the progress is +2)

SCHOOL GRADE - BB

Status Gr. B (0)	Performance Gr. B(+1)
------------------	-----------------------

OVERALL PERFORMANCE GRADES

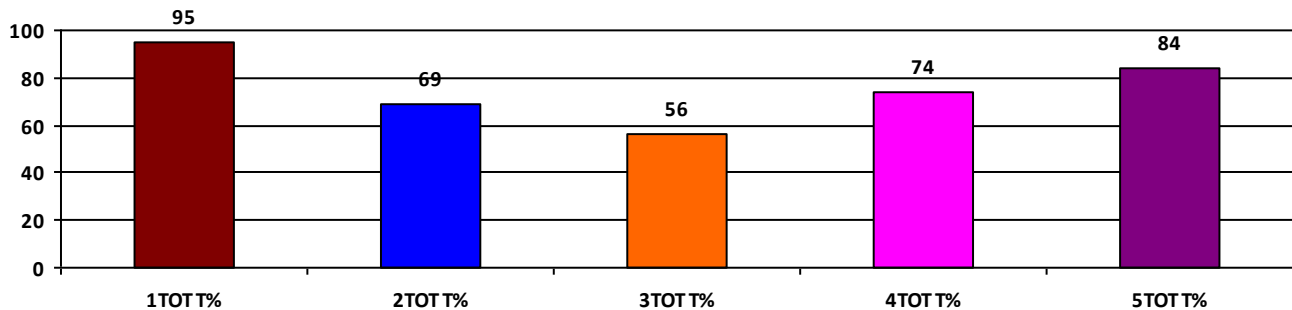
	Boys	Girls	Total
SCHOOL GR.	B	A	B
Diff. to Pre-Test	(+1)	(+1)	(+1)
DIST. GR.	B	B	B
STATE GR.	B	B	B

CLASSWISE APPEARED

DETAILS	I STD	II STD	III STD	IV STD	V STD
BOYS	3	5	9	3	3
GIRLS	3	2	4	6	6
TOTAL	6	7	13	9	9
Diff. to Pre-Test	(-1)	(+1)	(+1)	(-2)	(0)

CLASSWISE PERFORMANCE GRADES (% of marks)

DETAILS	I STD	II STD	III STD	IV STD	V STD
%	95	69	56	74	84
SCHOOL GR.	A	B	B	B	A
Diff. to Pre-Test	(+1)	(+2)	(+1)	(+1)	(+1)
DIST. GR.	A	B	B	B	B
STATE GR.	A	B	B	B	B



GRADEWISE PERFORMANCE (NO. OF STUDENTS)

ENGLISH	1 Std	2 Std	3 Std	4 Std	5 Std	TAMIL	1 Std	2 Std	3 Std	4 Std	5 Std
GR. A	6	3	1	3	5	GR. A	6	5	6	7	8
GR. B	0	2	3	5	3	GR. B	0	0	3	1	0
GR. C	0	1	8	0	1	GR. C	0	0	4	0	1
GR. D	0	1	1	1	0	GR. D	0	2	0	1	0
GR. E	0	0	0	0	0	GR. E	0	0	0	0	0

DEAL POST TEST 2019-20 - SCHOOL REPORT CARD

PONDY
DDW

34020112868 **KAMARAJ GMS, DAVIDPET**

All Grades represent the following scorings in % *

GRADE A - >75	* School Status Grade represents the total enrollment of the school (Not %)
GRADE B - 51 TO 75	
GRADE C - 26 TO 50	
GRADE D - 10 TO 25	
GRADE E - <10	

Note: The Values given in the brackets denote the difference between the Pre and Post Test Scores.
(For Example: If the Pre-Test Grade is 'C' and the Post-Test Grade is 'A', then the progress is +2)

SCHOOL GRADE - CB

Status Gr. C (0) Performance Gr. B (0)

OVERALL PERFORMANCE GRADES

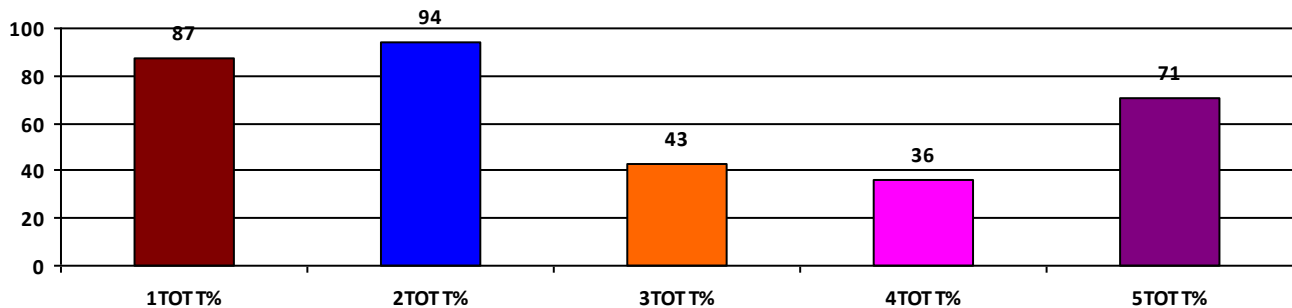
	Boys	Girls	Total
SCHOOL GR.	B	B	B
Diff. to Pre-Test	(0)	(-1)	(0)
DIST. GR.	B	B	B
STATE GR.	B	B	B

CLASSWISE APPEARED

DETAILS	I STD	II STD	III STD	IV STD	V STD
BOYS	3	3	1	2	5
GIRLS	2	4	2	1	3
TOTAL	5	7	3	3	8
Diff. to Pre-Test	(0)	(0)	(0)	(0)	(0)

CLASSWISE PERFORMANCE GRADES (% of marks)

DETAILS	I STD	II STD	III STD	IV STD	V STD
%	87	94	43	36	71
SCHOOL GR.	A	A	C	C	B
Diff. to Pre-Test	(0)	(0)	(-1)	(0)	(0)
DIST. GR.	A	B	B	B	B
STATE GR.	A	B	B	B	B



GRADEWISE PERFORMANCE (NO. OF STUDENTS)

ENGLISH	1 Std	2 Std	3 Std	4 Std	5 Std	TAMIL	1 Std	2 Std	3 Std	4 Std	5 Std
GR. A	3	6	1	0	6	GR. A	5	7	1	1	5
GR. B	2	1	0	1	1	GR. B	0	0	1	0	2
GR. C	0	0	1	0	0	GR. C	0	0	0	1	1
GR. D	0	0	0	1	1	GR. D	0	0	0	0	0
GR. E	0	0	1	1	0	GR. E	0	0	1	1	0

DEAL POST TEST 2019-20 - SCHOOL REPORT CARD

PONDY
DDW

34020112869 **AKKASWAMIGAL GMS, VAITHIKUPPAM**

All Grades represent the following scorings in % *

GRADE A - >75	* School Status Grade represents the total enrollment of the school (Not %)
GRADE B - 51 TO 75	
GRADE C - 26 TO 50	
GRADE D - 10 TO 25	
GRADE E - <10	

Note: The Values given in the brackets denote the difference between the Pre and Post Test Scores.
(For Example: If the Pre-Test Grade is 'C' and the Post-Test Grade is 'A', then the progress is +2)

SCHOOL GRADE - AB

Status Gr. A (0) Performance Gr. B(+1)

OVERALL PERFORMANCE GRADES

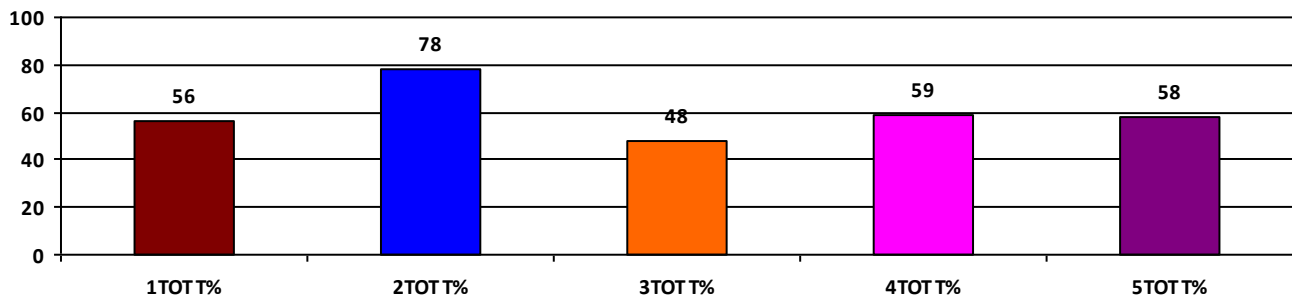
	Boys	Girls	Total
SCHOOL GR.	B	B	B
Diff. to Pre-Test	(+1)	(+1)	(+1)
DIST. GR.	B	B	B
STATE GR.	B	B	B

CLASSWISE APPEARED

DETAILS	I STD	II STD	III STD	IV STD	V STD
BOYS	6	7	11	7	15
GIRLS	13	10	15	8	13
TOTAL	19	17	26	15	28
Diff. to Pre-Test	(-2)	(-4)	(0)	(0)	(0)

CLASSWISE PERFORMANCE GRADES (% of marks)

DETAILS	I STD	II STD	III STD	IV STD	V STD
%	56	78	48	59	58
SCHOOL GR.	B	A	C	B	B
Diff. to Pre-Test	(0)	(+2)	(0)	(+1)	(+1)
DIST. GR.	A	B	B	B	B
STATE GR.	A	B	B	B	B



GRADEWISE PERFORMANCE (NO. OF STUDENTS)

ENGLISH	1 Std	2 Std	3 Std	4 Std	5 Std	TAMIL	1 Std	2 Std	3 Std	4 Std	5 Std
GR. A	3	9	3	3	11	GR. A	4	14	6	5	14
GR. B	6	6	6	4	5	GR. B	9	1	9	7	4
GR. C	7	2	9	5	7	GR. C	6	2	4	2	4
GR. D	1	0	5	3	3	GR. D	0	0	6	1	3
GR. E	2	0	3	0	2	GR. E	0	0	1	0	3

DEAL POST TEST 2019-20 - SCHOOL REPORT CARD

PONDY
DDW

34020113817 **GMS, PICHAVEERANPET**

All Grades represent the following scorings in % *

GRADE A - >75	* School Status Grade represents the total enrollment of the school (Not %)
GRADE B - 51 TO 75	
GRADE C - 26 TO 50	
GRADE D - 10 TO 25	
GRADE E - <10	

Note: The Values given in the brackets denote the difference between the Pre and Post Test Scores.
(For Example: If the Pre-Test Grade is 'C' and the Post-Test Grade is 'A', then the progress is +2)

SCHOOL GRADE - CA

Status Gr. C (0) Performance Gr. A(+1)

OVERALL PERFORMANCE GRADES

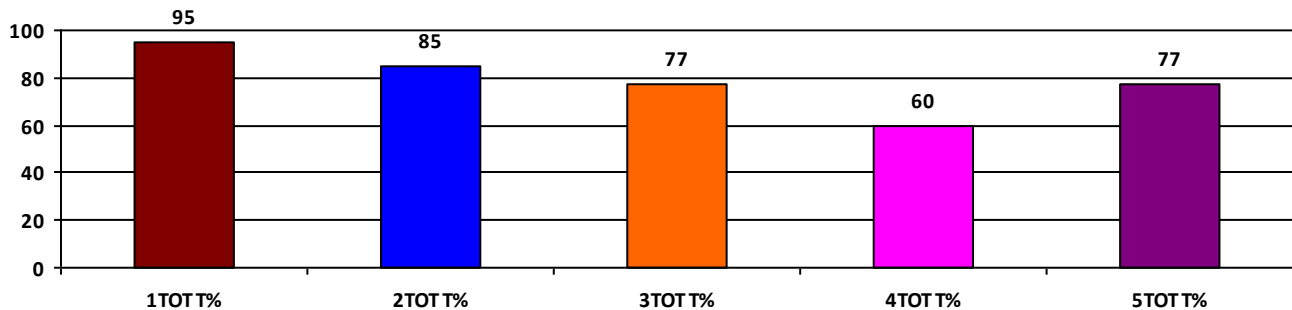
	Boys	Girls	Total
SCHOOL GR.	A	B	A
Diff. to Pre-Test	(+1)	(0)	(+1)
DIST. GR.	B	B	B
STATE GR.	B	B	B

CLASSWISE APPEARED

DETAILS	I STD	II STD	III STD	IV STD	V STD
BOYS	4	2	2	3	5
GIRLS	1	2	3	4	3
TOTAL	5	4	5	7	8
Diff. to Pre-Test	(0)	(0)	(0)	(0)	(0)

CLASSWISE PERFORMANCE GRADES (% of marks)

DETAILS	I STD	II STD	III STD	IV STD	V STD
%	95	85	77	60	77
SCHOOL GR.	A	A	A	B	A
Diff. to Pre-Test	(0)	(+2)	(+1)	(0)	(+2)
DIST. GR.	A	B	B	B	B
STATE GR.	A	B	B	B	B



GRADEWISE PERFORMANCE (NO. OF STUDENTS)

ENGLISH	1 Std	2 Std	3 Std	4 Std	5 Std	TAMIL	1 Std	2 Std	3 Std	4 Std	5 Std
GR. A	5	3	0	1	5	GR. A	5	4	4	0	5
GR. B	0	1	5	5	3	GR. B	0	0	1	6	2
GR. C	0	0	0	1	0	GR. C	0	0	0	1	1
GR. D	0	0	0	0	0	GR. D	0	0	0	0	0
GR. E	0	0	0	0	0	GR. E	0	0	0	0	0

DEAL POST TEST 2019-20 - SCHOOL REPORT CARD

PONDY
DDW

34020113822 **GGMS, MUTHIRAPALAYAM**

All Grades represent the following scorings in % *

GRADE A - >75	* School Status Grade represents the total enrollment of the school (Not %)
GRADE B - 51 TO 75	
GRADE C - 26 TO 50	
GRADE D - 10 TO 25	
GRADE E - <10	

Note: The Values given in the brackets denote the difference between the Pre and Post Test Scores.
(For Example: If the Pre-Test Grade is 'C' and the Post-Test Grade is 'A', then the progress is +2)

SCHOOL GRADE - AB

Status Gr. A (0) Performance Gr. B(+1)

OVERALL PERFORMANCE GRADES

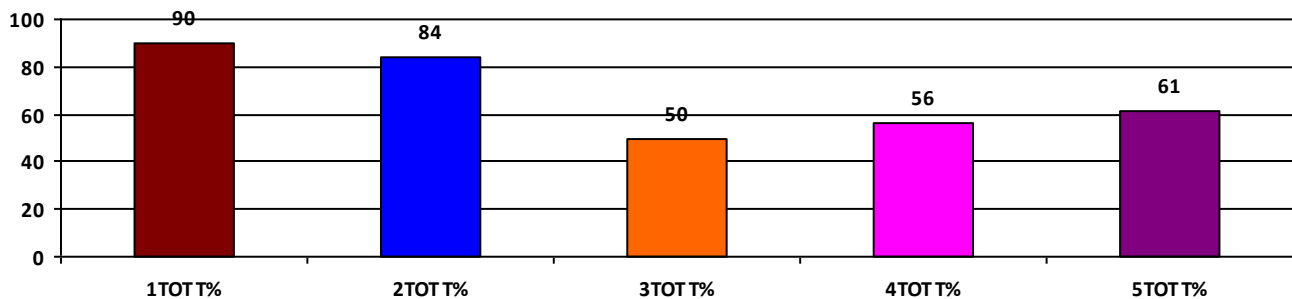
	Boys	Girls	Total
SCHOOL GR.	B	B	B
Diff. to Pre-Test	(+1)	(+1)	(+1)
DIST. GR.	B	B	B
STATE GR.	B	B	B

CLASSWISE APPEARED

DETAILS	I STD	II STD	III STD	IV STD	V STD
BOYS	10	5	17	14	15
GIRLS	11	10	11	11	15
TOTAL	21	15	28	25	30
Diff. to Pre-Test	(-2)	(+1)	(+2)	(+1)	(0)

CLASSWISE PERFORMANCE GRADES (% of marks)

DETAILS	I STD	II STD	III STD	IV STD	V STD
%	90	84	50	56	61
SCHOOL GR.	A	A	C	B	B
Diff. to Pre-Test	(+1)	(+3)	(+1)	(+1)	(+1)
DIST. GR.	A	B	B	B	B
STATE GR.	A	B	B	B	B



GRADEWISE PERFORMANCE (NO. OF STUDENTS)

ENGLISH	1 Std	2 Std	3 Std	4 Std	5 Std	TAMIL	1 Std	2 Std	3 Std	4 Std	5 Std
GR. A	19	14	5	5	12	GR. A	18	13	8	14	12
GR. B	2	0	6	5	11	GR. B	3	0	6	3	7
GR. C	0	1	8	9	3	GR. C	0	1	12	6	1
GR. D	0	0	8	4	1	GR. D	0	1	1	0	6
GR. E	0	0	1	2	3	GR. E	0	0	1	2	4

DEAL POST TEST 2019-20 - SCHOOL REPORT CARD

PONDY
DDW

34020114605 GMS, MUDALIARPET

All Grades represent the following scorings in % *

GRADE A - >75	
GRADE B - 51 TO 75	* School Status Grade
GRADE C - 26 TO 50	represents the total
GRADE D - 10 TO 25	enrollment of the
GRADE E - <10	school (Not %)

Note: The Values given in the brackets denote the difference between the Pre and Post Test Scores.
(For Example: If the Pre-Test Grade is 'C' and the Post-Test Grade is 'A', then the progress is +2)

SCHOOL GRADE - AC

Status Gr. A (0)	Performance Gr. C (0)
------------------	-----------------------

OVERALL PERFORMANCE GRADES

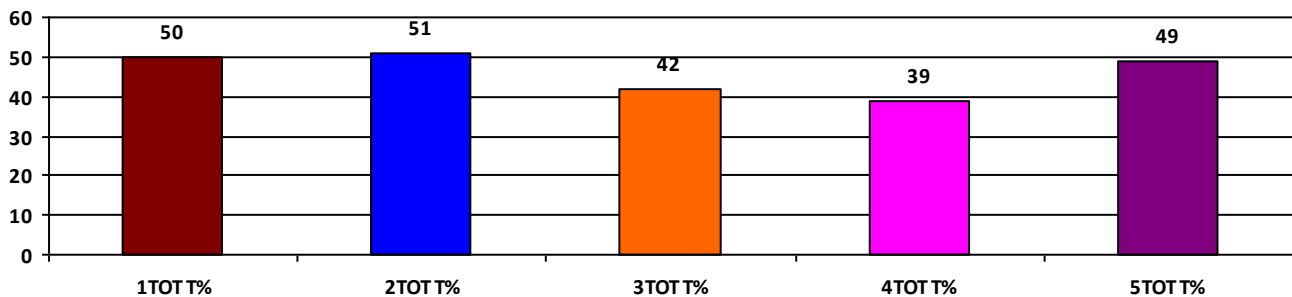
	Boys	Girls	Total
SCHOOL GR.	C	C	C
Diff. to Pre-Test	(0)	(0)	(0)
DIST. GR.	B	B	B
STATE GR.	B	B	B

CLASSWISE APPEARED

DETAILS	I STD	II STD	III STD	IV STD	V STD
BOYS	8	10	16	12	12
GIRLS	3	9	15	16	16
TOTAL	11	19	31	28	28
Diff. to Pre-Test	(-1)	(-3)	(0)	(+2)	(0)

CLASSWISE PERFORMANCE GRADES (% of marks)

DETAILS	I STD	II STD	III STD	IV STD	V STD
%	50	51	42	39	49
SCHOOL GR.	C	B	C	C	C
Diff. to Pre-Test	(0)	(+1)	(0)	(0)	(0)
DIST. GR.	A	B	B	B	B
STATE GR.	A	B	B	B	B



GRADEWISE PERFORMANCE (NO. OF STUDENTS)

ENGLISH	1 Std	2 Std	3 Std	4 Std	5 Std	TAMIL	1 Std	2 Std	3 Std	4 Std	5 Std
GR. A	2	0	0	2	5	GR. A	6	7	7	4	7
GR. B	2	7	11	5	9	GR. B	2	5	8	5	9
GR. C	4	10	7	12	7	GR. C	0	3	6	10	3
GR. D	0	0	12	8	4	GR. D	0	2	7	7	5
GR. E	3	2	1	1	3	GR. E	3	2	3	2	4

DEAL POST TEST 2019-20 - SCHOOL REPORT CARD

PONDY
DDW

34020114608 GMS, OK PALAYAM

All Grades represent the following scorings in % *

GRADE A - >75	* School Status Grade represents the total enrollment of the school (Not %)
GRADE B - 51 TO 75	
GRADE C - 26 TO 50	
GRADE D - 10 TO 25	
GRADE E - <10	

Note: The Values given in the brackets denote the difference between the Pre and Post Test Scores.
(For Example: If the Pre-Test Grade is 'C' and the Post-Test Grade is 'A', then the progress is +2)

SCHOOL GRADE - BB

Status Gr. B (0)	Performance Gr. B(+1)
------------------	-----------------------

OVERALL PERFORMANCE GRADES

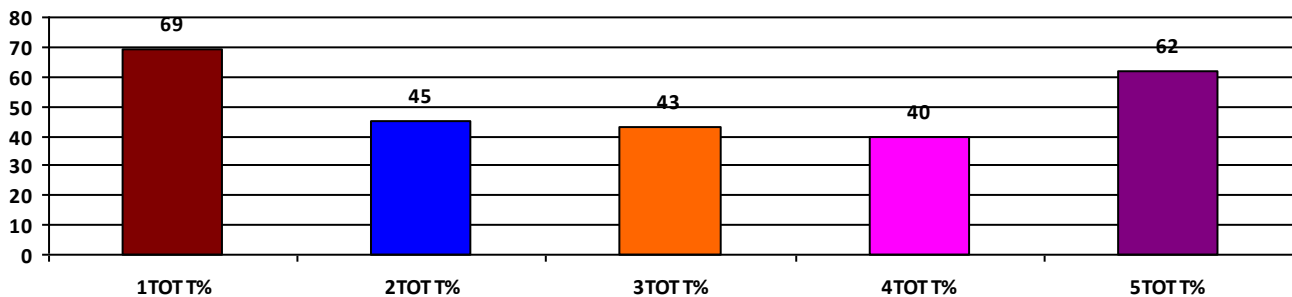
	Boys	Girls	Total
SCHOOL GR.	C	B	B
Diff. to Pre-Test	(0)	(+1)	(+1)
DIST. GR.	B	B	B
STATE GR.	B	B	B

CLASSWISE APPEARED

DETAILS	I STD	II STD	III STD	IV STD	V STD
BOYS	4	4	6	7	3
GIRLS	8	3	6	8	10
TOTAL	12	7	12	15	13
Diff. to Pre-Test	(0)	(+1)	(+3)	(+3)	(+1)

CLASSWISE PERFORMANCE GRADES (% of marks)

DETAILS	I STD	II STD	III STD	IV STD	V STD
%	69	45	43	40	62
SCHOOL GR.	B	C	C	C	B
Diff. to Pre-Test	(+1)	(0)	(0)	(0)	(+1)
DIST. GR.	A	B	B	B	B
STATE GR.	A	B	B	B	B



GRADEWISE PERFORMANCE (NO. OF STUDENTS)

ENGLISH	1 Std	2 Std	3 Std	4 Std	5 Std	TAMIL	1 Std	2 Std	3 Std	4 Std	5 Std
GR. A	7	0	3	1	6	GR. A	7	2	1	6	6
GR. B	1	1	3	3	1	GR. B	3	2	4	3	4
GR. C	1	4	2	4	4	GR. C	0	1	3	1	0
GR. D	2	1	1	1	0	GR. D	1	2	2	0	2
GR. E	1	1	3	6	2	GR. E	1	0	2	5	1

DEAL POST TEST 2019-20 - SCHOOL REPORT CARD

PONDY
DDW

34020200716 N.J GGMS, VEERAMPATTINAM

All Grades represent the following scorings in % *

GRADE A - >75	
GRADE B - 51 TO 75	* School Status Grade
GRADE C - 26 TO 50	represents the total
GRADE D - 10 TO 25	enrollment of the
GRADE E - <10	school (Not %)

Note: The Values given in the brackets denote the difference between the Pre and Post Test Scores.
(For Example: If the Pre-Test Grade is 'C' and the Post-Test Grade is 'A', then the progress is +2)

SCHOOL GRADE - AB

Status Gr. A (0)	Performance Gr. B(+1)
------------------	-----------------------

OVERALL PERFORMANCE GRADES

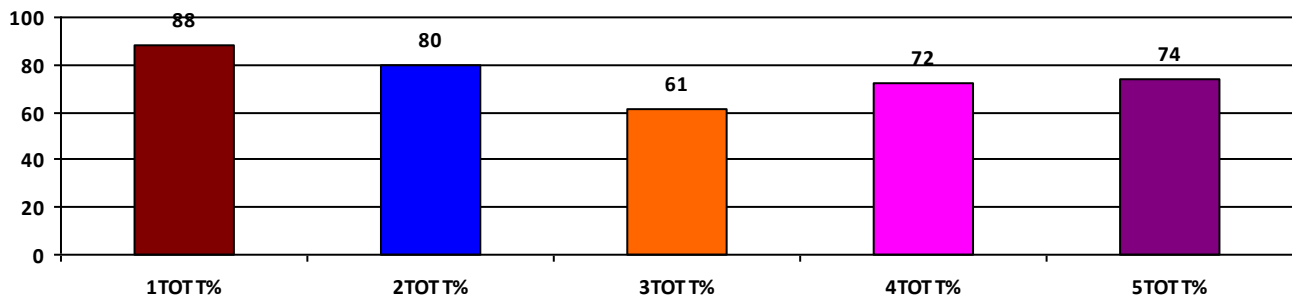
	Boys	Girls	Total
SCHOOL GR.	NA	B	B
Diff. to Pre-Test	(+8)	(+1)	(+1)
DIST. GR.	B	B	B
STATE GR.	B	B	B

CLASSWISE APPEARED

DETAILS	I STD	II STD	III STD	IV STD	V STD
BOYS	0	0	0	0	0
GIRLS	11	15	13	21	17
TOTAL	11	15	13	21	17
Diff. to Pre-Test	(0)	(0)	(0)	(0)	(+2)

CLASSWISE PERFORMANCE GRADES (% of marks)

DETAILS	I STD	II STD	III STD	IV STD	V STD
%	88	80	61	72	74
SCHOOL GR.	A	A	B	B	B
Diff. to Pre-Test	(0)	(+2)	(+1)	(+1)	(+1)
DIST. GR.	A	B	B	B	B
STATE GR.	A	B	B	B	B



GRADEWISE PERFORMANCE (NO. OF STUDENTS)

ENGLISH	1 Std	2 Std	3 Std	4 Std	5 Std	TAMIL	1 Std	2 Std	3 Std	4 Std	5 Std
GR. A	10	8	2	10	11	GR. A	9	11	8	14	10
GR. B	0	5	6	7	4	GR. B	2	3	3	4	5
GR. C	1	2	3	3	0	GR. C	0	1	0	2	0
GR. D	0	0	1	0	0	GR. D	0	0	1	0	0
GR. E	0	0	1	1	2	GR. E	0	0	1	1	2

DEAL POST TEST 2019-20 - SCHOOL REPORT CARD

PONDY
DDW

34020306210 **GGMS, VILLIANUR**

All Grades represent the following scorings in % *

GRADE A - >75	
GRADE B - 51 TO 75	* School Status Grade
GRADE C - 26 TO 50	represents the total
GRADE D - 10 TO 25	enrollment of the
GRADE E - <10	school (Not %)

Note: The Values given in the brackets denote the difference between the Pre and Post Test Scores.
(For Example: If the Pre-Test Grade is 'C' and the Post-Test Grade is 'A', then the progress is +2)

SCHOOL GRADE - AB

Status Gr. A (0)	Performance Gr. B (0)
------------------	-----------------------

OVERALL PERFORMANCE GRADES

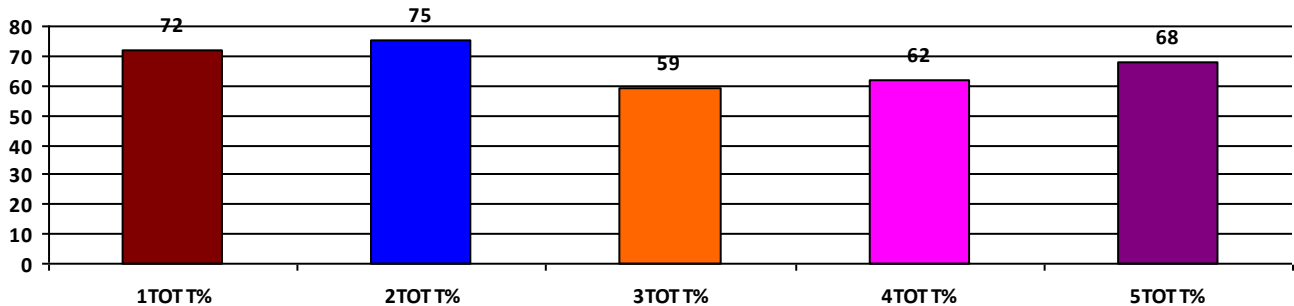
	Boys	Girls	Total
SCHOOL GR.	NA	B	B
Diff. to Pre-Test	(+8)	(0)	(0)
DIST. GR.	B	B	B
STATE GR.	B	B	B

CLASSWISE APPEARED

DETAILS	I STD	II STD	III STD	IV STD	V STD
BOYS	0	0	0	0	0
GIRLS	17	16	28	28	36
TOTAL	17	16	28	28	36
Diff. to Pre-Test	(-1)	(+1)	(+3)	(+2)	(+2)

CLASSWISE PERFORMANCE GRADES (% of marks)

DETAILS	I STD	II STD	III STD	IV STD	V STD
%	72	75	59	62	68
SCHOOL GR.	B	B	B	B	B
Diff. to Pre-Test	(0)	(0)	(0)	(0)	(0)
DIST. GR.	A	B	B	B	B
STATE GR.	A	B	B	B	B



GRADEWISE PERFORMANCE (NO. OF STUDENTS)

ENGLISH	1 Std	2 Std	3 Std	4 Std	5 Std	TAMIL	1 Std	2 Std	3 Std	4 Std	5 Std
GR. A	11	10	6	13	17	GR. A	6	9	12	11	13
GR. B	4	3	8	7	15	GR. B	7	4	10	5	16
GR. C	2	2	11	7	3	GR. C	2	2	3	8	6
GR. D	0	0	0	1	0	GR. D	2	1	0	3	0
GR. E	0	1	3	0	1	GR. E	0	0	3	1	1